

British Union Conference

Tithe Report May 2010

Month on Month	2009	2010	Inc / -Dec	Variance
SEC	1,062,585	1,074,927	12,342	1.1
NEC	442,069	447,425	5,356	1.2
WM	27,616	23,244	-4,372	-18.8
SM	31,171	39,483	8,312	21.1
IM	53,017	50,140	-2,877	-5.7
Total	1,616,458	1,635,219	18,761	1.1

Cumulative

SEC	4,716,653	4,782,637	65,984	1.4
NEC	1,968,027	2,035,117	67,090	3.3
WM	124,704	138,206	13,503	9.8
SM	132,921	147,845	14,924	10.1
IM	235,537	219,376	-16,161	-7.4
Total	7,177,842	7,323,181	145,340	2.0

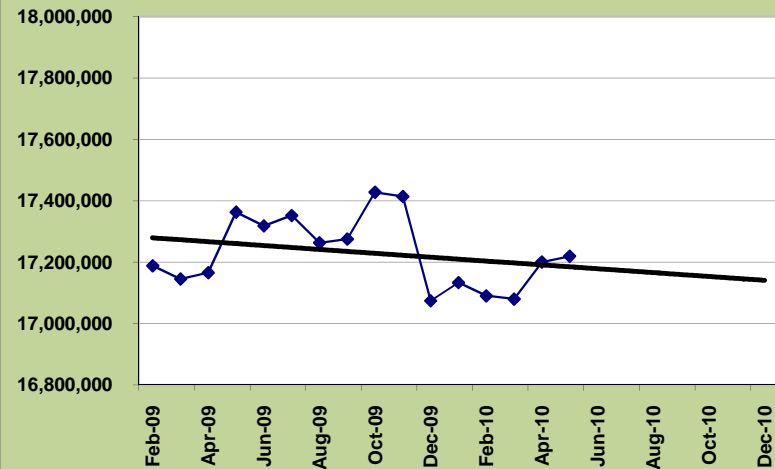
Month on Average

	2009 Avg	2010 Avg		
SEC	939,078	956,527	17,449	2%
NEC	385,908	407,023	21,115	5%
WM	24,507	27,641	3,134	13%
SM	27,399	29,569	2,170	8%
IM	45,968	43,875	-2,092	-5%
Total	1,422,861	1,464,636	41,776	3%

Budgets

	Annual	To Date		
SEC	11,702,400	4,876,000	-93,363	-1.9
NEC	5,000,000	2,083,333	-48,217	-2.3
WM	306,000	127,500	10,706	8.4
SM	330,000	137,500	10,345	7.5
IM	560,000	233,333	-13,957	-6.0
Total	17,898,400	7,457,667	-279,825	-3.8
BUC	1,800,000	750,000	-32,216	-4.3

British Union Conference - 12 Month Trend



Conference & Mission Tithe

