

British Union Conference

Tithe Report April 2010

Month on Month	2009	2010	Inc / -Dec	Variance
SEC	791,351	857,833	66,482	7.8
NEC	358,103	385,953	27,850	7.2
WM	25,187	29,686	4,499	15.2
SM	21,491	19,492	-2,000	-10.3
IM	24,022	47,994	23,972	49.9
Total	1,220,155	1,340,958	120,804	9.0

Cumulative

SEC	3,654,068	3,707,710	53,643	1.4
NEC	1,525,958	1,587,692	61,734	3.9
WM	97,088	114,962	17,874	15.5
SM	101,750	108,362	6,612	6.1
IM	182,520	169,236	-13,284	-7.8
Total	5,561,384	5,687,963	126,579	2.2

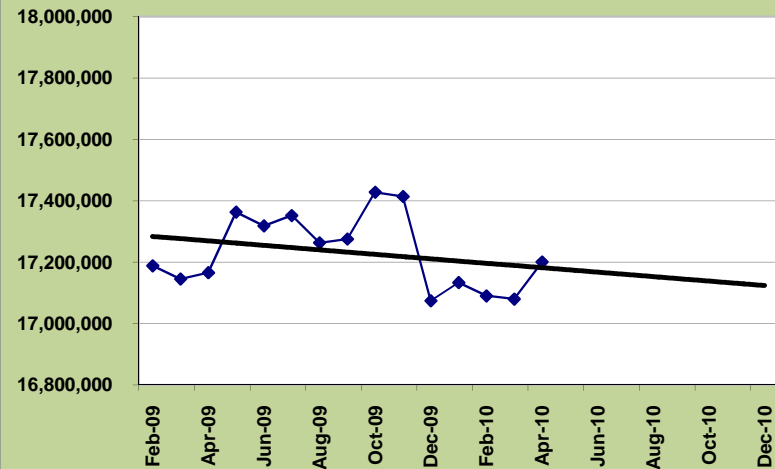
Month on Average

	2009 Avg	2010 Avg		
SEC	939,078	926,928	-12,151	-1%
NEC	385,908	396,923	11,015	3%
WM	24,507	28,741	4,234	17%
SM	27,399	27,091	-309	-1%
IM	45,968	42,309	-3,659	-8%
Total	1,422,861	1,421,991	-870	0%

Budgets

	Annual	To Date		
SEC	11,702,400	3,900,800	-193,090	-5.0
NEC	5,000,000	1,666,667	-78,975	-4.7
WM	306,000	102,000	12,962	12.7
SM	330,000	110,000	-1,638	-1.5
IM	560,000	186,667	-17,431	-9.3
Total	17,898,400	5,966,133	-404,749	-6.8
BUC	1,800,000	600,000	-43,862	-7.3

British Union Conference - 12 Month Trend



Conference & Mission Tithe

