

British Union Conference

Tithe Report December 2009

Month on Month	2008	2009	Inc / -Dec	Variance
SEC	1,383,850	983,136	-400,714	-40.8
NEC	400,765	435,509	34,743	8.0
WM	62,475	20,782	-41,693	-200.6
SM	34,024	24,465	-9,559	-39.1
IM	61,608	49,362	-12,246	-24.8
Total	1,942,722	1,513,255	-429,468	-28.4

Cumulative

SEC	11,025,518	11,268,942	243,424	2.2
NEC	4,461,265	4,630,896	169,631	3.7
WM	324,830	294,083	-30,747	-10.5
SM	318,218	328,794	10,575	3.2
IM	521,078	551,612	30,534	5.5
Total	16,650,909	17,074,327	423,418	2.5

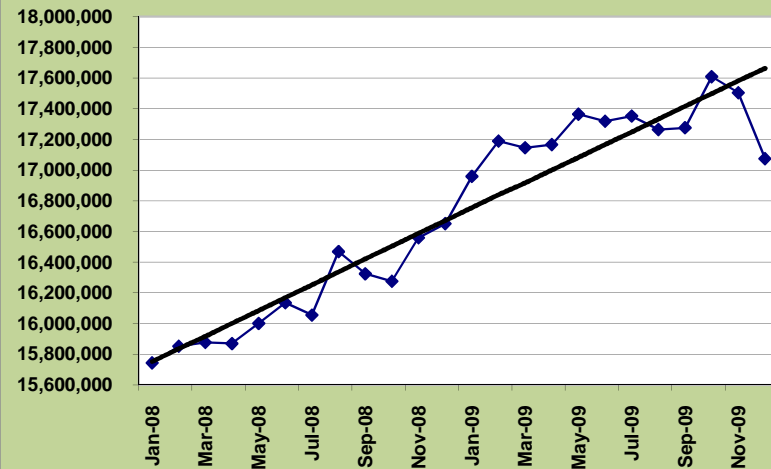
Month on Average

	2008 Avg	2009 Avg		
SEC	918,793	939,078	20,285	2%
NEC	371,772	385,908	14,136	4%
WM	27,069	24,507	-2,562	-9%
SM	26,518	27,399	881	3%
IM	43,423	45,968	2,545	6%
Total	1,387,575	1,422,861	35,286	3%

Budgets

	Annual	To Date		
SEC	10,892,112	10,892,112	376,830	3.5
NEC	4,550,000	4,550,000	80,896	1.8
WM	300,000	300,000	-5,917	-2.0
SM	300,000	300,000	28,794	9.6
IM	540,000	540,000	11,612	2.2
Total	16,582,112	16,582,112	68,797	0.4
BUC	1,550,000	1,550,000	115,091	7.4

British Union Conference - 12 Month Trend



Conference & Mission Tithe

