

## British Union Conference

### Tithe Report May 2009

Month on Month	2008	2009	Inc / -Dec	Variance
SEC	974,035	1,062,585	88,550	8.3
NEC	340,551	442,069	101,518	23.0
WM	22,933	27,616	4,683	17.0
SM	31,377	31,171	-206	-0.7
IM	49,966	53,017	3,051	5.8
<b>Total</b>	<b>1,418,861</b>	<b>1,616,458</b>	<b>197,596</b>	<b>12.2</b>

#### Cumulative

SEC	4,271,945	4,716,653	444,708	9.4
NEC	1,739,020	1,968,027	229,007	11.6
WM	110,366	124,704	14,338	11.5
SM	131,495	132,921	1,426	1.1
IM	212,516	235,537	23,021	9.8
<b>Total</b>	<b>6,465,342</b>	<b>7,177,842</b>	<b>712,500</b>	<b>9.9</b>

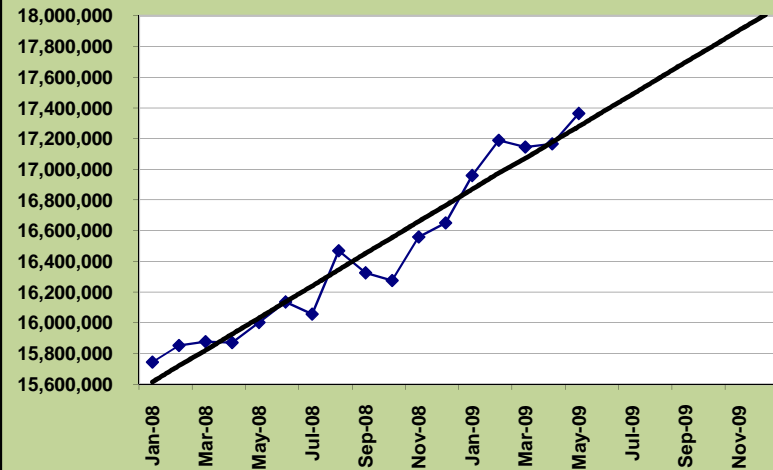
#### Month on Average

	2008 Avg	2009 Avg		
SEC	918,793	943,331	24,538	3%
NEC	371,772	393,605	21,833	6%
WM	27,069	24,941	-2,128	-8%
SM	26,518	26,584	66	0%
IM	43,423	47,107	3,684	8%
<b>Total</b>	<b>1,387,575</b>	<b>1,435,568</b>	<b>47,993</b>	<b>3%</b>

#### Budgets

	Annual	To Date		
SEC	10,000,000	4,166,667	549,986	13.2
NEC	4,550,000	1,895,833	72,193	3.8
WM	300,000	125,000	-296	-0.2
SM	300,000	125,000	7,921	6.3
IM	540,000	225,000	10,537	4.7
<b>Total</b>	<b>15,690,000</b>	<b>6,537,500</b>	<b>-72,158</b>	<b>-1.1</b>
<b>BUC</b>	<b>1,550,000</b>	<b>645,833</b>	<b>701</b>	<b>0.1</b>

### British Union Conference - 12 Month Trend



### Conference & Mission Tithe

